



16

TimeLine® ERP

**WAS ALREADY
STRONG**

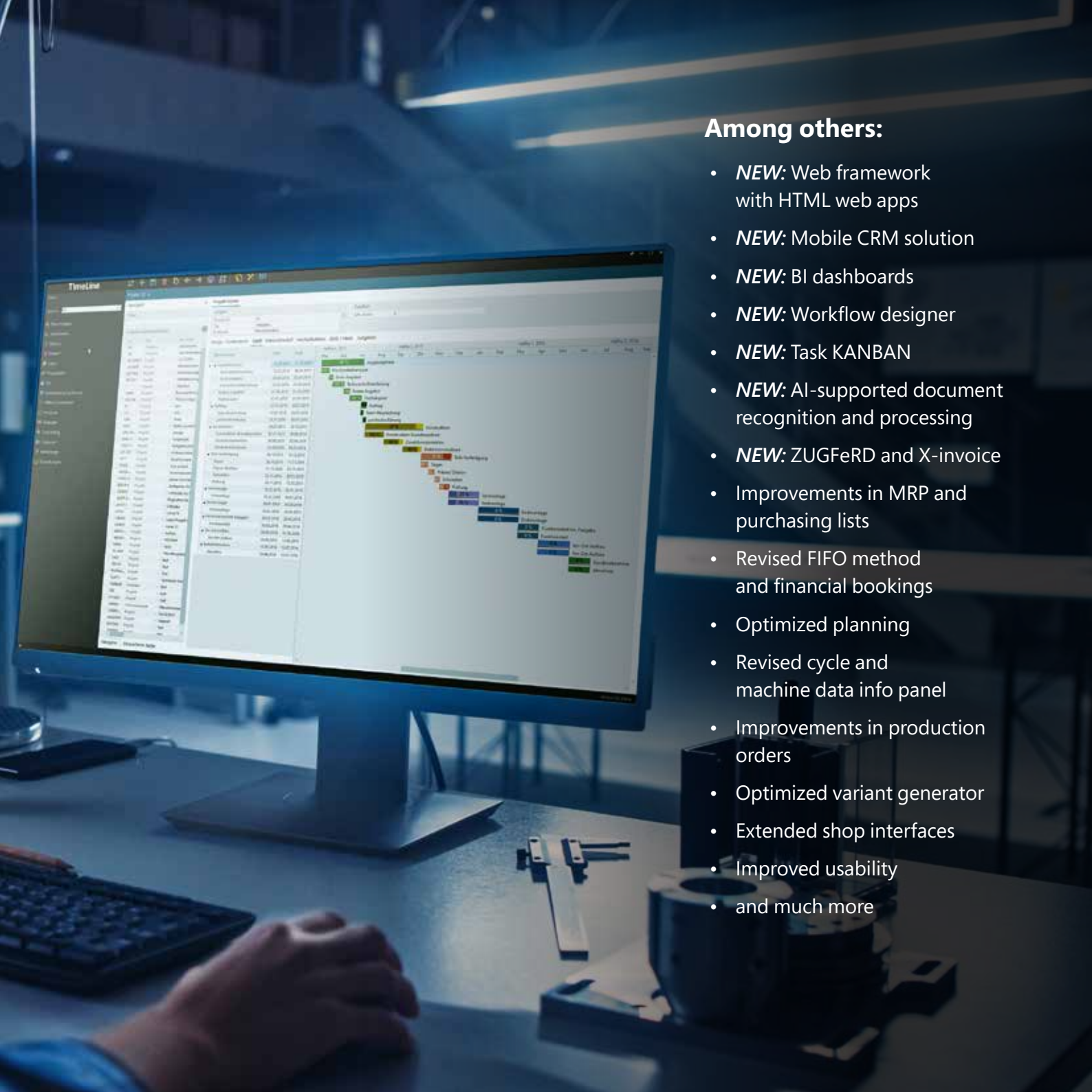
Now even better with Version 16

New Industry Packages – New Web Modules – AI Integration

TimeLine® ERP

Over 50 new functions and updates



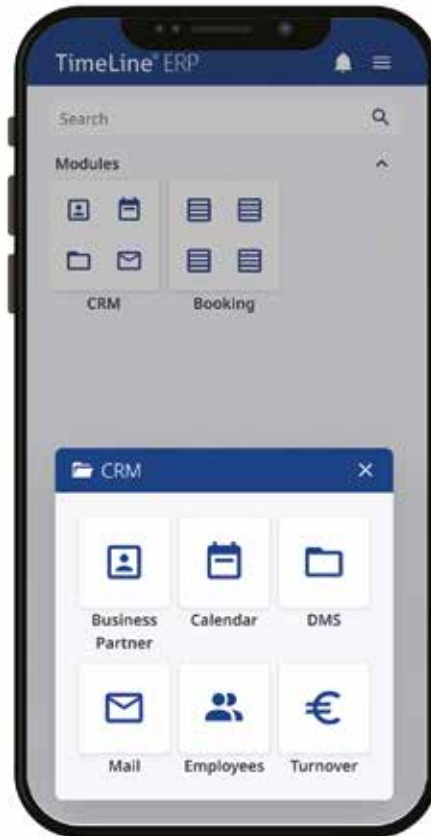
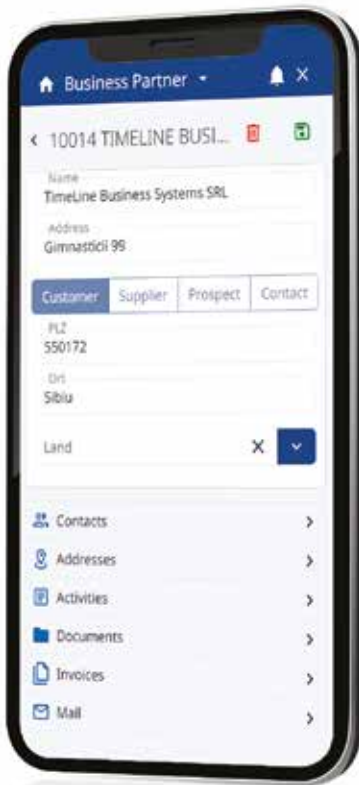


Among others:

- **NEW:** Web framework with HTML web apps
- **NEW:** Mobile CRM solution
- **NEW:** BI dashboards
- **NEW:** Workflow designer
- **NEW:** Task KANBAN
- **NEW:** AI-supported document recognition and processing
- **NEW:** ZUGFeRD and X-invoice
- Improvements in MRP and purchasing lists
- Revised FIFO method and financial bookings
- Optimized planning
- Revised cycle and machine data info panel
- Improvements in production orders
- Optimized variant generator
- Extended shop interfaces
- Improved usability
- and much more

WEBFRAMEWORK

The new development generation with web framework and web apps



Version 16 marks the beginning of a new development era for the TimeLine platform, which now includes a web framework and enables the creation of purely HTML-based web modules.



Ultralight Web Frontend

With the new ultralight web frontend, both business and user interfaces run on the server. By synchronizing only visible objects between the HTML client and the TimeLine server through state sync, the performance and responsiveness of the application are significantly improved.



HTML Scanner-App

With the HTML Scanner App, stocking, de-stocking, and transferring can be carried out quickly and easily. The web app also simplifies the picking process for work orders and shipping. Additionally, the scanner app enables flexible management of containers.



Integration of UI Designer in TimeLine Developer

The full integration of the UI Designer for the new web framework into TimeLine Developer will be completed by the end of 2024, making HTML web apps just as quickly creatable and customizable as WPF / E3 modules.



Mobile CRM Solution

The new web CRM is user-friendly and optimized for mobile devices. With features like calendar, phonebook, conversation notes, project time tracking, task feedback and clock-in / clock-out entries, you have access to your important data and activities anytime, anywhere.

New Dashboard System

With Version 16, TimeLine introduces a new dashboard system that takes data visualization to a new level. The new no-code dashboard designer allows versatile data sources to be transformed into attractive dashboards without programming knowledge. Experience a variety of chart types and effortless design thanks to graphical WYSIWYG designers.



No-Code Dashboard Designer

Version 16 now includes a fully integrated no-code dashboard designer and viewer, which is part of the BI Toolkit module. Pre-built dashboard templates simplify getting started.



Versatile Data Integration

Dashboards can retrieve data not only from the TimeLine database but also from external data sources such as external DB connections, Excel sheets, OLAP or JSON data.



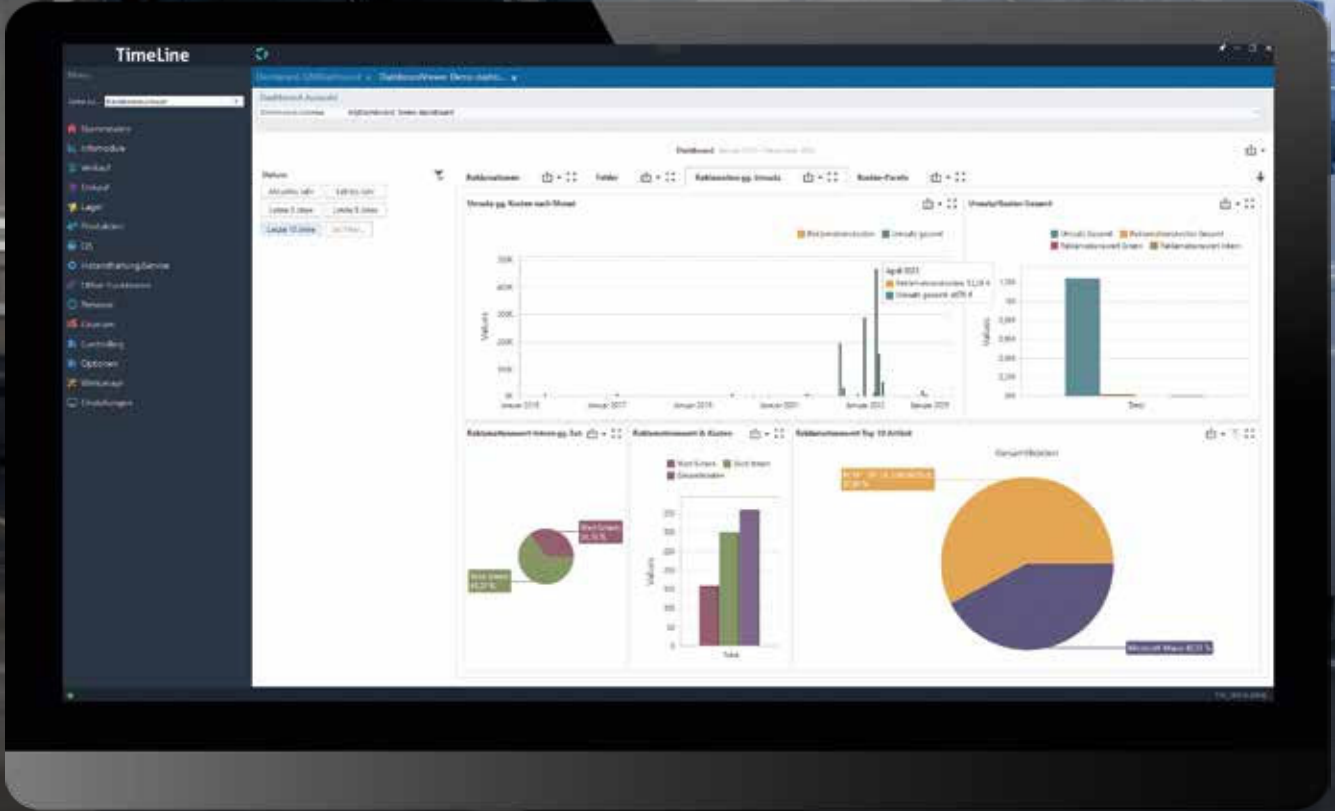
Wide Range of Chart Types

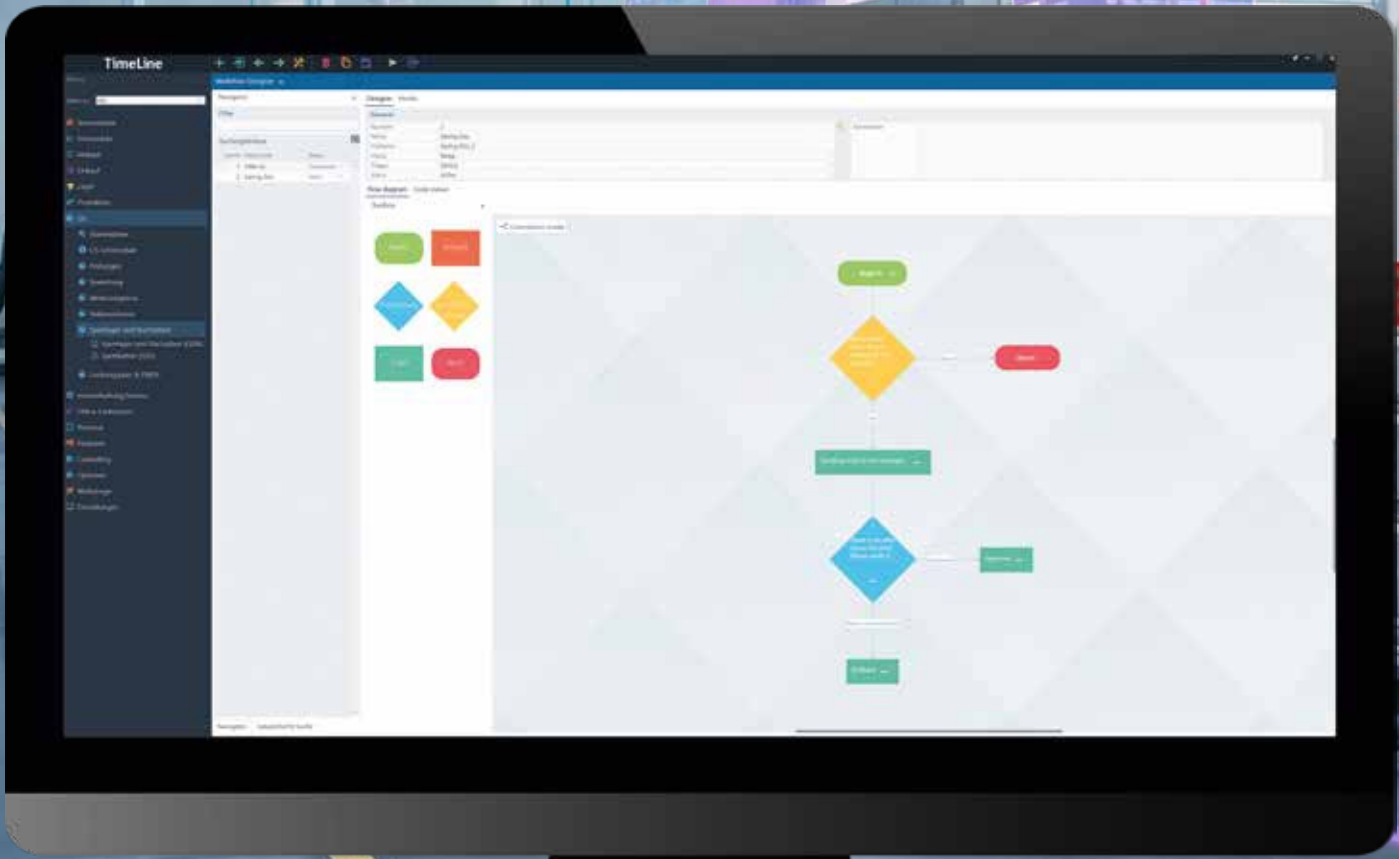
A wide variety of chart types is available, including pivot, grid, pies, scatter graphs, gauges, cards, treemaps, geopoint maps and many more. This diversity allows data to be presented in the most suitable and meaningful way.



No Programming Required

Designing dashboards requires no programming knowledge. Both the data source design and the dashboard design are fully covered by graphical WYSIWYG designers.





Graphical Workflow Designer and Flowcharter

A new graphical workflow designer and flowcharter offers an intuitive way to design workflows. With the programmable workflow engine within the application, workflows can be created and managed directly.

Direct Access to All Business Class Elements



The workflow engine allows direct access to all elements of the business class, enabling modifications and extensions of existing standard processes on an individual basis. This allows business logic to be tailored and optimized down to the core.

Integrated Code Editor with Intellisense



The integrated code editor provides a comfortable working environment with Intellisense functionality that assists in programming. Workflow-specific snippet support makes creating even more complex workflows easier, allowing desired processes to be implemented quickly and efficiently.

Functional Workflow States



Version 16 allows workflow states to be set both through the workflow and manually. The status tables are freely definable, with each status capable of setting locks on the underlying object, such as a print lock on a document.

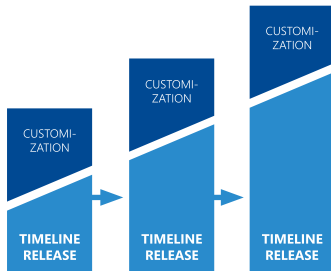
CUSTOMIZING

Tailored to your needs



Modular and Flexible

The modular structure of TimeLine ERP gives you the freedom to add features at any time as your requirements grow.

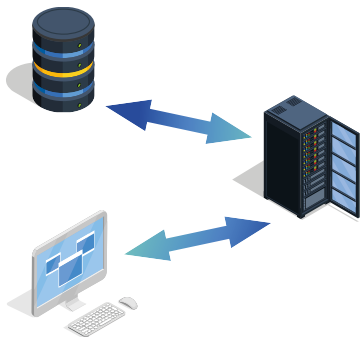


Individual

Customizations to the ERP system can be handled much faster than with comparable systems thanks to our own development platform and the integrated migration tools. In addition, adjustments are always made while maintaining release capability.

Independent

Whether you are working from home, in the office or on site at client/supplier premises: The three-tier architecture with the TimeLine server as an intelligent middleware ensures that you can work securely and encrypted on your TimeLine database from anywhere – without the need for additional tools such as a VPN tunnel or a terminal server. In addition, the TimeLine server manages your external access, Multi-Tenants, as well as your licenses and server-side services. You remain flexible and location-independent in the long term.



In the Cloud or On-Premise

For us, data sovereignty starts with the question of location. You can host TimeLine ERP either on-premise or in the cloud. You determine your IT infrastructure.

INDUSTRY SOLUTIONS

Ready for your individual production

Due to our 30 years of continuous development of the system in close cooperation with users, TimeLine offers various specialized ERP industry packages for segment-specific requirements.



TIMELINE ELECTRONICS
EMS provider



TIMELINE PLASTICS
Rubber and Plastics Industry



TIMELINE AUTOMOTIVE
Serial Manufacturing and Automotive Industry



TIMELINE ENGINEERING
Mechanical and Plant Engineering



TIMELINE FOUNDRY
Foundries



TIMELINE SURFACE
For contract manufacturers, surface and electroplating



Would you like to learn more?



TimeLine Business Solutions Group

HQ: Gebauer GmbH
Obere Dammstraße 8–10
42653 Solingen
Phone: +49 212 230 35 200
Email: sales@timeline.de



Online presentation

The fastest way to get to know TimeLine ERP. An expert will guide you through the software's functions and discuss your individual requirements and questions with you.



Trial version

Discover the world of benefits of an integrated ERP system in your personal test environment. 90 days of unrestricted features.



www.timeline-erp.com/en